

the NON-CONTACT TONOMETER FT-1000.

Non Contact Tonometer

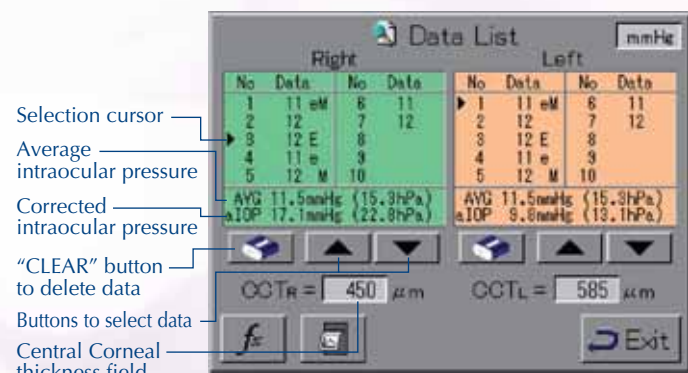
● Making examinations easier

“Large color display” and “icons”

Thanks to the 5.7-inch color TFT LCD and easy-to-understand icons, even new operators can easily operate the FT-1000.

“Comfortable operation” and “correction of intraocular pressure” from the touch panel

It is a little troublesome to delete unnecessary measurements such as error data. However, the FT-1000 allows you to delete this data easily from the touch panel. In addition, the FT-1000 has a function for correcting the intraocular pressure. The intraocular pressure can be corrected simply by entering the measured central corneal thickness of the examined eye.

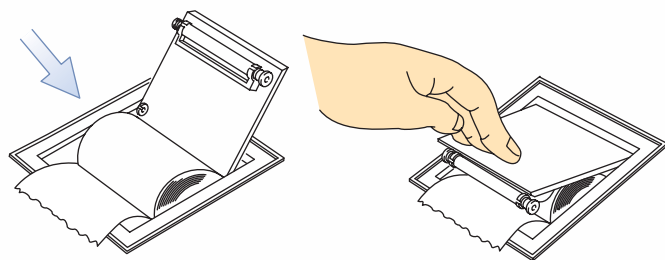


Selection cursor
Average intraocular pressure
Corrected intraocular pressure
“CLEAR” button to delete data
Buttons to select data
Central Corneal thickness field

● Easing maintenance

“Drop-in printer paper” is simple

“Drop-in printer paper” - all you have to do is throw in a paper roll and close the cover. When replacing the paper roll, you just place a new roll and close the cover. There is no need to thread and feed the paper.



The nozzle is “simply cleaned with a cloth dampened with alcohol.”

All you need to do to clean the nozzle is to simply wipe it with a cloth dampened with alcohol. In addition, the important optical components are located in the rear section 32-mm behind the nozzle so that these internal components rarely become dirty.



One vision, Two sharp eyes with Our Innovation

FT-1000

NON-CONTACT TONOMETER



- No surprises for your patients
- Ensures easy examinations for patients
- Considering safety of patients
- Consistent measuring accuracy
- Making examinations easier
- Easing maintenance

FT-1000 SPECIFICATIONS

IOP measurement

Measurable range	0 to 60 mmHg (0 to 80hPa)
Measuring unit	mmHg / hPa

Observation range

Approximately 15mm x 9mm

Main unit

Built-in Printer	Thermal Printer
Movable part movement range	Up-Down:45mm Right-Left: 88mm Front-Rear:40mm
Chin-rest Movable range	70mm
Data output type	RS-232C
Display	5.7 inch color liquid crystal display
Dimension and Weight	Dimension 306 (W) x 493 (D) x 463 (H) mm Weight approx.18kg

Power

Voltage	AC100V to 240V
Frequency	50/60Hz
Consumption power	85VA to 110VA

Operating environment

Operating temperature range	10C° - 40C°
Humidity	30% - 75%

One vision, Two sharp eyes with Our Innovation

FT-1000

Patient Friendly
Non Contact Tonometer

NON-CONTACT TONOMETER



- No surprises for your patients
- Ensures easy examinations for patients
- Considering safety of patients
- Consistent measuring accuracy
- Making examinations easier
- Easing maintenance



Tomey Corporation [Asia-Pacific]

2-11-33 Noritakeshinmachi
Nishi-Ku, Nagoya, 451-0051, Japan
Tel: ++81-52-581-5327
Fax: ++81-52-561-4735
E-Mail: intl@tomey.co.jp

Tomey GmbH [Europe]

Am Weichselgarten 19a
D-91058 Erlangen-Tennenlohe, Germany
Tel: ++49-9131-77710
Fax: ++49-9131-777120
E-Mail: info@tomey.de

For more information, visit our web site <http://www.tomey.com>

© 2006 Tomey Corporation. Specifications are subject to change without notice. Any products mentioned herein are registered trademarks of their respective owners.



One vision, Two sharp eyes with Our Innovation

FT-1000
NON-CONTACT TONOMETER

Gentle Care for Patients... This is the reason for the NON-CONTACT TONOMETER FT-1000.

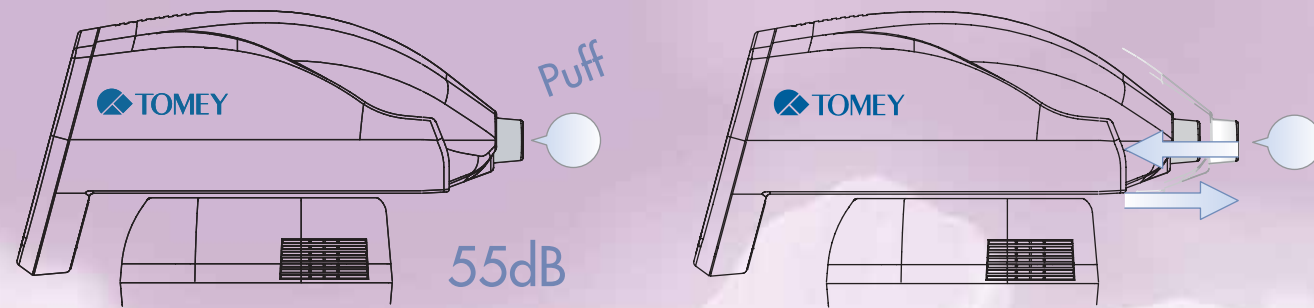
Patient Friendly Non Contact Tonometer

Full of patient-friendly functions

●No surprises for your patients

“Air Noisec like a gentle whisper

The noise when air blows from the equipment may be one cause of surprise for patients. The air noise level of the FT-1000 is only 55 dB. Gentle air noise like a whisper assures that patients can be examined comfortably.



“Notifying patients of the Measurement timing”

The measuring head moves back and forth for equipment starts measurement. Patients no longer need to be afraid of sudden puffs of air, and relax more during their examination.

“Measurement time lag of only 15 ms” reduces measurement errors and dispersions.

The FT-1000 has reduced the time lag from the completion of alignment to the beginning of measurement to approximately 15/1,000 seconds. Because this improvement reduces measurement dispersion and errors due to blinking or movement of sight during the time lag, patients are not subjected to repeated re-examinations. The FT-1000 is designed to reduce the number of times that air is blown onto the eyes for the benefit of the patient.



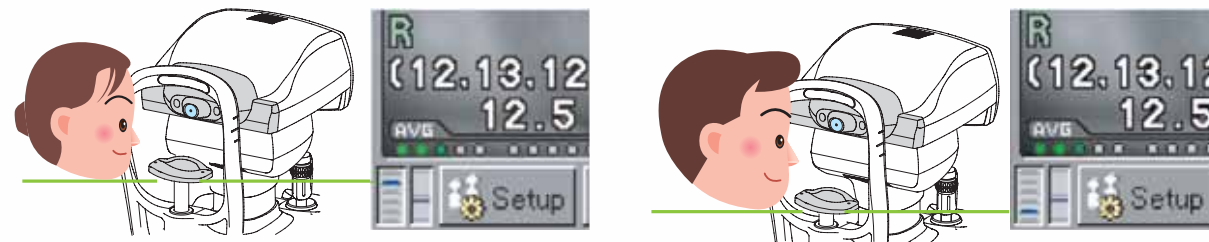
“Quick charge” makes consecutive measurements smooth.

When holding a patient's eyelid and taking consecutive measurements, we want to complete the measurements as soon as possible to shorten the time the patient must open their eye. The FT-1000 is equipped with a quick-charge circuit, so there is no stopping the measurement process to charge for the next air blow. This allows you to conduct consecutive measurements smoothly within a short time - one more device to ensure comfort for patients.



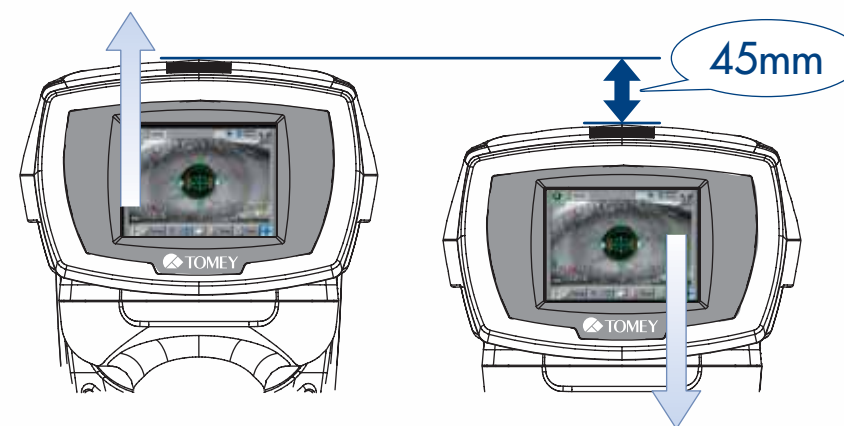
“Chin rest height indicator” allows you to adjust the chin rest height before starting measurement.

Because the height of the chin rest is shown on the LCD monitor, you can adjust the chin rest height before patients position their face. Patients do not need to move their faces up and down on the chin rest with their foreheads against the forehead pad - a particularly nice consideration for ladies with makeup on.



“Large measuring head stroke” reduces the adjustment range of the chin rest.

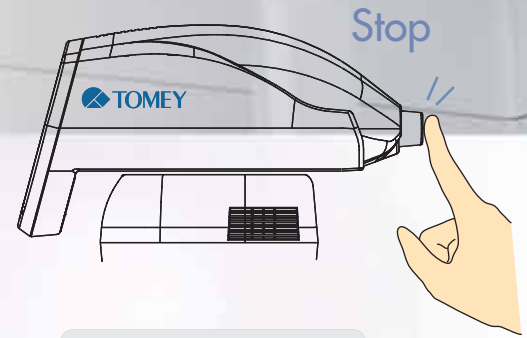
In addition, we have increased the vertical stroke of the measuring head to 45 mm! This larger stroke remarkably reduces the need to adjust the chin rest height and shortens the time required for measurement.



●Considering safety of patients

Reliable “touch sensor”

Even if the measuring nozzle makes contact with a patient, the touch sensor is activated to stop the measuring head immediately. Patients can relax more during examinations.



“Digital limiter” adjustable for each patient

The limiter prevents the measuring head from moving too close to the patient's eyes. The FT-1000 controls the limiter digitally and finely adjusts the optimal limiter position for each patient. The FT-1000 is provided with four safety measures: an “alarm” and “warning screen” when the measuring head becomes too close to the eye, a “limiter” to prevent the measuring head from moving too close to the eye, and a “touch sensor” activated when the measuring head contacts the patient.

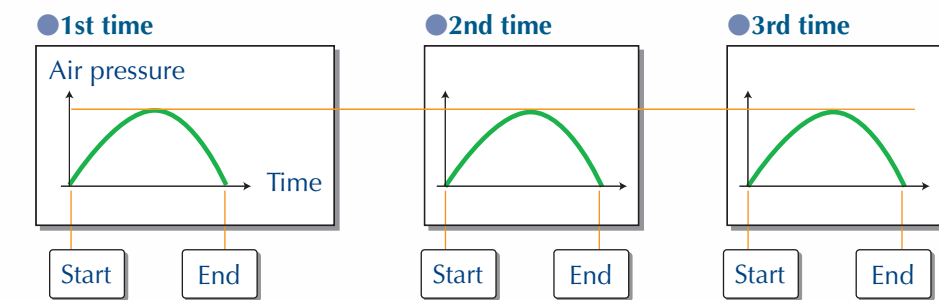


Also featuring many doctor-friendly functions

●Consistent measuring accuracy

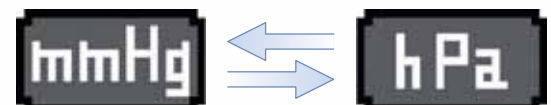
“Constant air pressure” is ensured.

The non-contact tonometer is designed to convert the applanation air pressure to intraocular pressure. We have assumed that constant measuring conditions for every measurement are important for stable accuracy, and provided the FT-1000 with a control system to stabilize the air pressure. This system regulates the air pressure to be almost constant.



Values can also be displayed in “hPa.”

“mmHg” or “hPa” can be selected for the unit of the intraocular pressure. Even if the standard for the intraocular pressure is changed in the future, the FT-1000 will be compatible.

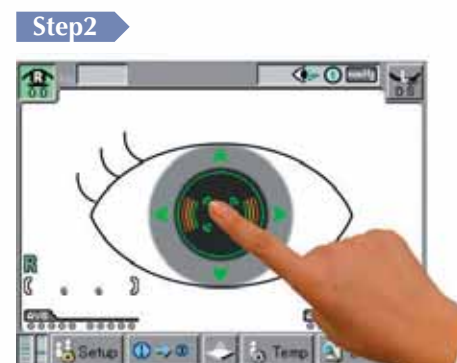


“Please open your eyes wide.” “Please do not move.” We wanted to reduce any periods of patient discomfort as much as possible. The Touch Alignment of the FT-1000 quickly aligns the eye center with the center of the screen simply by touching the eye shown on the screen.

The Auto Alignment and Auto Shot functions then start measurement immediately. This is another vast benefit to patient care.



Simply touch the pupil center shown on the screen to roughly align the eye center with the center of the screen.



Lightly press the center of the screen to move the measuring head toward the patient. The Auto Alignment and Auto Shot functions will then quickly complete measurement.